

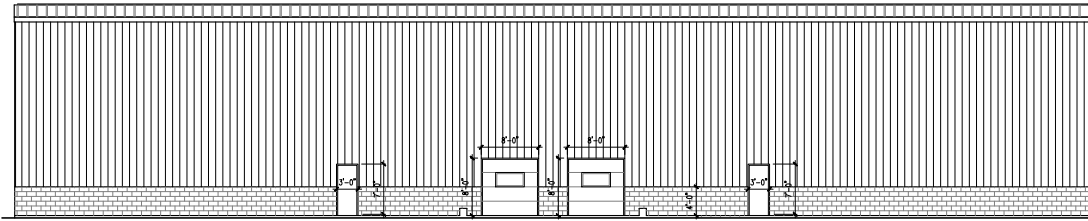
FLOOR PLAN
SCALE: 1/8" = 1'-0"

DOOR SCHEDULE									
DOOR NO.	SIZE	MTL.	TYPE	FRAME	HWDR	REMARKS			
100	6'-0" x 7'-0"	ALUM	A	ALUM	1	INSULATED GLASS & GLAZING (2) 3070 DOORS & 1 SIBELIGHT			
101	6'-0" x 7'-0"	ALUM	A	ALUM	1	INSULATED GLASS & GLAZING (2) 3070 DOORS & 1 SIBELIGHT			
102	3'-0" x 7'-0"	HM	B	HM	2	MEN'S ROOM DOOR			
103	3'-0" x 7'-0"	HM	B	HM	2	OFFICE DOOR WITH KEYPAD LOCKSET			
104	3'-0" x 7'-0"	HM	B	HM	2	WOMEN'S ROOM DOOR			
105	3'-0" x 7'-0"	HM	B	HM	2	MEN'S ROOM DOOR			
106	3'-0" x 7'-0"	HM	B	HM	2	OFFICE DOOR WITH KEYPAD LOCKSET			
107	3'-0" x 7'-0"	HM	B	HM	2	WOMEN'S ROOM DOOR			
108	3'-0" x 7'-0"	STL	C	STL	3				
109	14'-0" x 16'-0"	STL	D	STL	3	STL. INSUL. OHC; HARDWARE PROVIDED BY MANUF.			
110	3'-0" x 7'-0"	STL	C	STL	3				
111	6'-0" x 8'-0"	STL	E	STL	3	STL. INSUL. OHC; HARDWARE PROVIDED BY MANUF.			
112	6'-0" x 8'-0"	STL	E	STL	3	STL. INSUL. OHC; HARDWARE PROVIDED BY MANUF.			
113	3'-0" x 7'-0"	STL	C	STL	3				
114	14'-0" x 16'-0"	STL	B	STL	3	STL. INSUL. OHC; HARDWARE PROVIDED BY MANUF.			
115	3'-0" x 7'-0"	STL	C	STL	3				

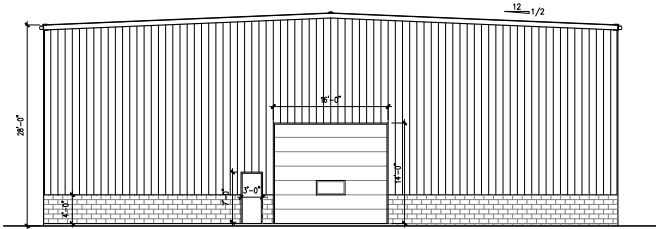
STOREFRONT GLASS & GLAZING SPECIFICATIONS:
DOOR AND WINDOW SYSTEM SHALL BE 4-5 HOLLOW STEEL TAMPED CLEAR GLASS ENTRANCE DOOR. PRONG FILL WITH EXTRUDED ALUMINUM RAIL ACROSS TOP AND BOTTOM AND VERTICAL EXTRUDED ALUMINUM RAIL AT EACH DOOR EDGE. VERTICAL SILES SHALL BE PROVIDED WITH MANUFACTURER'S NEOPRENE WEATHER-STRIPPING. TAMPED SAFETY GLASS SHALL COMPLY WITH ASTM C1048-9000 KNO 1 FT. (FULLY TAMPED) CONDITION AS PER TYPE 1 AND SHALL ALSO COMPLY WITH SDCS MOOR 1020-11 AND AHS 2073. PUSH/PULL HARDWARE SHALL BE 12" VERTICAL PULL x 32" HORIZONTAL PULL, 1" DIA. STANDARD BRUSHED ALUM. FINISH. LOCKING DEVICE SHALL BE STANDARD ROTARY KILL LOCK, ONE PER DOOR LOCK. HINGES SHALL BE ROTARY (PANO STYLE) AND CONCRETE OVERHEAD CLOSER. MANUFACTURED/SUPPLIED BY KAMMEK COMPANY, OR APPROVED EQUAL.

- HARDWARE SET 1**
- (1) FULL MORTISE CONTINUOUS HINGES
 - (1) KEYPAD LOCKSET
 - (1) PULL - INTERIOR
 - (1) CLOSER/HOLDER
 - (1) SET WEATHER STRIPPING, THRESHOLD AND SWEEP
 - ALL HARDWARE BY ALUMINUM DOOR SUPPLIER
- HARDWARE SET 2**
- (1-1/2) PAIR HINGES
 - (1) KEYPAD LOCKSET OR KEYPAD LOCKSET
 - (1) LEVELERS
 - (1) SLIDERS
 - (1) CLOSER/STOP
- HARDWARE SET 3**
- (1-1/2) PAIR HINGES
 - (1) KEYPAD LOCKSET
 - (1) PULL - EXTERIOR
 - (1) PANC - INTERIOR
 - (1) CLOSER/HOLDER
- NOTE: LOCKS ARE TO BE KEVED TO OWNER'S REQUIREMENTS

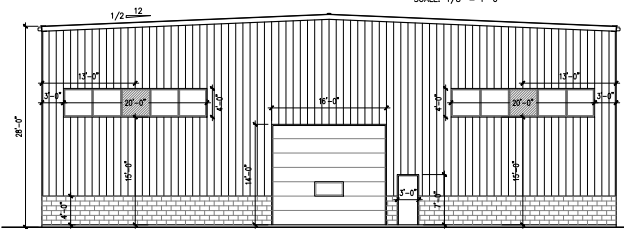
WINDOW SCHEDULE							
MARK	QUANTITY	UNIT DIMENSIONS	HEADER HEIGHT	FRAME	HEAD	JAMB	REMARKS
1	2	20'-0" x 4'-0"	14'-4" A.F.F.	HM			
2	2	16'-0" x 3'-2 1/4"	3'-2" A.F.F.	HM			



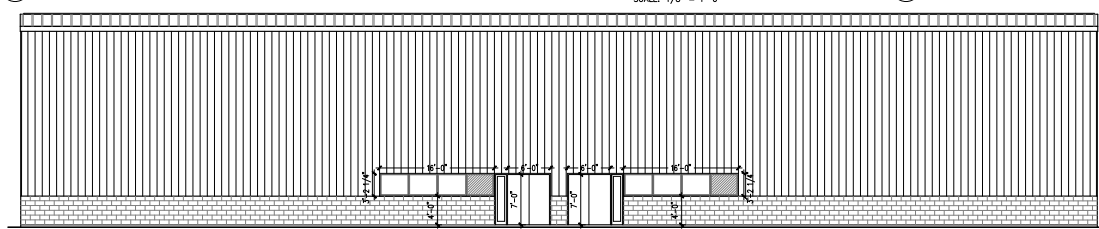
WEST ELEVATION
SCALE: 1/8" = 1'-0"



NORTH ELEVATION
SCALE: 1/8" = 1'-0"



SOUTH ELEVATION
SCALE: 1/8" = 1'-0"



EAST ELEVATION
SCALE: 1/8" = 1'-0"

NO.	DATE	DESCRIPTION

ENGINEERING DESIGN PLANS FOR +/- 12,000sqf WAREHOUSE
200 PINLEY ROAD, TOWN OF GATES
200 PINLEY ROAD LLC / UMBERTO BERARDI
EAST AMHERST, NY 14045
PHONE: (716) 439-0188 FAX: (716) 439-0189

APEX CONSULTING
SURVEY & ENGINEERING SERVICES, P.C.
SURVEYING • ENGINEERING • LANDSCAPE ARCHITECTURE
102 EAST AVENUE, LOCKPORT, NEW YORK 14094
Phone: (716) 439-0188 FAX: (716) 439-0189



ANY UNAUTHORIZED ALTERATION OR MODIFICATION OF THIS DRAWING DOCUMENT IS A VIOLATION OF THE PROFESSIONAL ENGINEERING AND SURVEYING LAWS OF THE STATE OF NEW YORK SITE EDITION LAW
DATE: 11/15/21
SCALE: AS NOTED
PROJECT NO.: 21-1897
DRAWN BY: ACM
CHECKED BY: TWA
A1